

Pressure Regulator Fixtures

Application: Point-of-use regulation of high purity gases. Used for compressed air and inert gases, including nitrogen, helium, argon and oxygen. Fixture is specially cleaned, assembled and packaged for use with high purity gases.

Mounting: Special tall turret with 3/8" IPS male heavy duty shank (assembled), locknut and washer. Pressure regulator mounts on side of turret to conserve counter space.

Regulator: Non-relieving type with brass body and neoprene diaphragm.

Inlet Pressure Range: 25-400 PSI.

Outlet Pressure Range: 5-125 PSI.

Valve: Fine control needle valve for precise flow control. Valve has forged brass body, floating tapered stainless steel needle and replaceable stainless steel seat.

Outlet: Removable quick connect fitting with 1/4" IPS male plug.

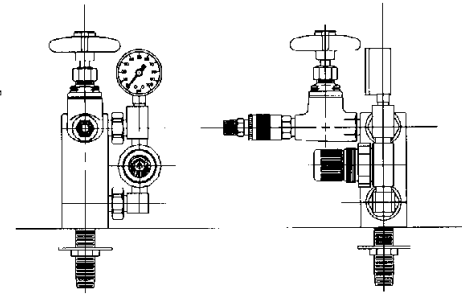
Quality Assurance: Fixture is specially cleaned, fully assembled and factory tested prior to shipment.

ADDITIONAL MODEL

L2873-771-2SWSA Same as above except with two regulators and valves at 180 degrees.

L2873-771WSA

*Pressure Regulator Fixture,
Deck Mounted*



Application: Point-of-use regulation of high purity gases. Used for compressed air and inert gases, including nitrogen, helium, argon and oxygen. Fixture is specially cleaned, assembled and packaged for use with high purity gases.

Mounting: Turret base with 3/8" IPS male heavy duty shank (assembled), locknut and washer.

Regulator: Non-relieving type with brass body and neoprene diaphragm.

Inlet Pressure Range: 25-400 PSI.

Outlet Pressure Range: 5-125 PSI.

Valve: Fine control needle valve for precise flow

control. Valve has forged brass body, floating tapered stainless steel needle and replaceable stainless steel seat.

Outlet: Removable quick connect fitting with 1/4" IPS male plug.

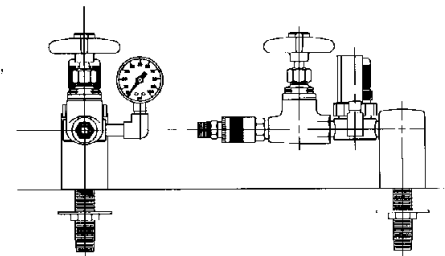
Quality Assurance: Fixture is specially cleaned, fully assembled and factory tested prior to shipment.

ADDITIONAL MODEL

L2873-366-132SWSA Same as above except with two regulators and valves at 180 degrees.

L2873-366-131WSA

*Pressure Regulator Fixture,
Deck Mounted*



Application: Point-of-use regulation of high purity gases. Used for compressed air and inert gases, including nitrogen, helium, argon and oxygen. Fixture is specially cleaned, assembled and packaged for use with high purity gases.

Mounting: Panel mounted flange with 3/8" IPS male heavy duty shank (assembled), locknut and washer.

Regulator: Non-relieving type with brass body and neoprene diaphragm.

Inlet Pressure Range: 25-400 PSI.

Outlet Pressure Range: 5-125 PSI.

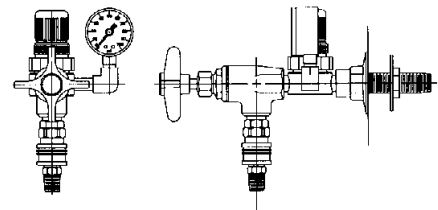
Valve: Fine control needle valve for precise flow control. Valve has forged brass body, floating tapered stainless steel needle and replaceable stainless steel seat.

Outlet: Removable quick connect fitting with 1/4" IPS male plug.

Quality Assurance: Fixture is specially cleaned, fully assembled and factory tested prior to shipment.

L3173-366-158WSA

*Pressure Regulator Fixture,
Panel Mounted*



Application: Point-of-use regulation of high purity gases. Used for compressed air and inert gases, including nitrogen, helium, argon and oxygen. Fixture is specially cleaned, assembled and packaged for use with high purity gases.

Mounting: Regulator assembly mounts on front face of fume hood. Assembly includes two panel mounted union flanges with 1/4" IPS shanks, locknuts and washers.

Regulator: Non-relieving type with brass body and neoprene diaphragm.

Inlet Pressure Range: 25-400 PSI.

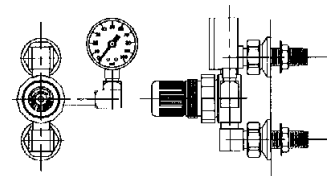
Outlet Pressure Range: 5-125 PSI.

Quality Assurance: Assembly is specially cleaned, fully assembled and factory tested prior to shipment.

Note: Pressure regulator assembly must be used with a remote control valve and outlet fitting (ordered separately). Please refer to pages 28-29 for complete information.

L774V-R

*Pressure Regulator Fitting,
Fume Hood Mounted*



The Parts Hotline
1-800-WSF-PART

312.666.5500 Voice
312.666.8597 Fax
info@wsflab.com

WaterSaver
Chicago, Illinois, USA.

19